

**COMBiLiFT**  
LiFTING INNOVATION



# SAFETY - STORAGE - EFFICIENCY

**UNLOCK EVERY INCH OF YOUR STORAGE WITH COMBILIFT!**



# Index

Supporting Your Industry .....	6
The Combilift Advantage .....	7
Innovation, Flexibility & Service .....	8
A World Class Team .....	9
In Empowering Our Customers' Growth .....	10
Focused On Sustainability .....	11

## Warehouse Consultancy .....

Day One Return on Investment .....	13
------------------------------------	----

## Long Load Handling Specialists

C-SERIES .....	14
COMBi-CB .....	16
COMBi-CBC .....	18
COMBi-CUBE .....	18
COMBi-CB70E .....	19
COMBi-SL .....	20
COMBi-SLE .....	20
COMBi-4WSL .....	21
COMBi-FSE .....	21
COMBi-GT/ST .....	22
COMBi-AGT .....	23
COMBi-MR .....	24
COMBi-OP .....	25

## Combilift Warehouse Range

AISLE MASTER .....	26
AISLE MASTER COLD STORE .....	28
AISLE MASTER AMe-OP .....	28

## Combilift Pedestrian Range .....

COMBi-WR .....	30
COMBi-CS .....	31
COMBi-PPT .....	32
COMBi-WR4 .....	33

## Straddle Carriers

COMBi-SC .....	34
COMBi-SC 3 HIGH .....	36
COMBi-MG .....	37
COMBi-SBT .....	38
COMBi-LC BLADE .....	39
COMBi-SPI .....	40

## Container Loaders

COMBi-CSS .....	41
COMBi-CLL .....	41

## Poultry

COMBi-RT .....	42
COMBi-LR .....	42

## Options

After Sales Support .....	43
Refurbished/Used .....	43
Attachments .....	44
COMBi-SAFELIFT .....	44
COMBi-CONNECT .....	45

# Celebrating 100,000 Combilifts in Operation

Combilift has been revolutionising the way companies handle and store goods for almost three decades — and with over 100,000 trucks now in operation worldwide, our continued growth is a testament to the trust customers place in our solutions. We help companies of all sizes and from every industry to maximise the capacity, safety and efficiency of their warehouse and storage facilities.

Our pioneering product range of multidirectional, articulated and pedestrian forklifts, straddle carriers and container loaders allows you to manoeuvre long loads safely, reduce aisle widths and increase the amount of space available for storage.

**100,000<sup>th</sup>  
truck in  
operation**

**€500m+  
revenue**



## Improve Safety – Maximise Storage – Increase Efficiency

At Combilift, we're passionate about delivering material handling solutions that maximise storage, boost efficiency, and prioritise safety. Built on solid engineering and trusted technology, Combilift is the go-to provider for long load handling. From palletised goods and containers to awkward or oversized products, there's a Combilift designed to meet your needs.



# Supporting Your Industry

Whether you work in the steel, timber, concrete, shipping or logistics industries, Combilift has a handling solution to suit your needs.

Long and awkward loads are what we specialise in but we have developed a range of innovative solutions to make your business safer and more productive



## Long & Awkward Load Specialists

Combilift makes handling long and awkward loads safer, faster, and more efficient. With the ability to travel in the direction of the load and full multidirectional operation, even the largest loads can be moved easily and safely across your site.



## Work Seamlessly Indoors & Out

Combilift products have the ability to operate both indoors and out, in the harshest of conditions, removing the need for double handling.



## The Combilift Advantage

The Combilift ethos is to help customers unlock every inch of their storage space without the need to expand the size of their facility. Understanding the available space and how it is being used is critical to running a more sustainable, profitable business and unlock new opportunities for growth.

From warehouses to worksites, Combilift helps keep the world moving — safer, smarter, and more efficiently than ever.

### Safety

Our innovative safety technology means you can move goods around your facility safely with less risk of product damage or injury to those around you.

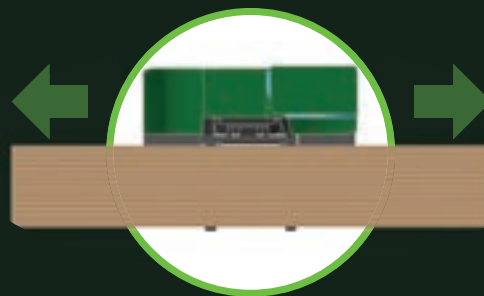
### Storage

Multidirectional operation means our trucks require much less room to manoeuvre long loads safely. Aisle widths can be reduced, increasing the amount of space available for storage. By switching to Combilift solutions you could gain up to 100% extra storage space.

### Efficiency

By using solid engineering and straightforward design Combilift's are built for gruelling schedules. 4-way steering and the ability to operate indoors and out, mean the largest loads can be efficiently moved around your facility in all weather conditions.

### Safely Handle Long Loads



### MultiDirectional



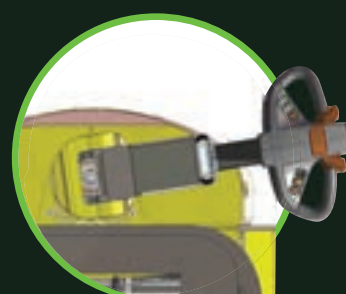
### Move up to 120 Ton



### Narrow Aisle Performance



### Innovative Safety Features



## Innovation, Flexibility & Service

Innovation, Flexibility and Service are the core values on which Combilift's success is built and has seen us become the world's fastest-growing forklift manufacturer.

Proudly based in Monaghan in the heart of rural Ireland, our global headquarters host a team of expert staff that work tirelessly to find solutions that improve safety, enhance storage and increase the productivity of our customer's operations.



# 100,000+ Trucks in 85 Countries

## Supporting You, Locally

We have offices and dealer support facilities all over the world including the US, UK, Canada, Europe, Asia and Australia. Our team of sales, support, engineering and training experts will all go the extra mile to ensure customer satisfaction is guaranteed.

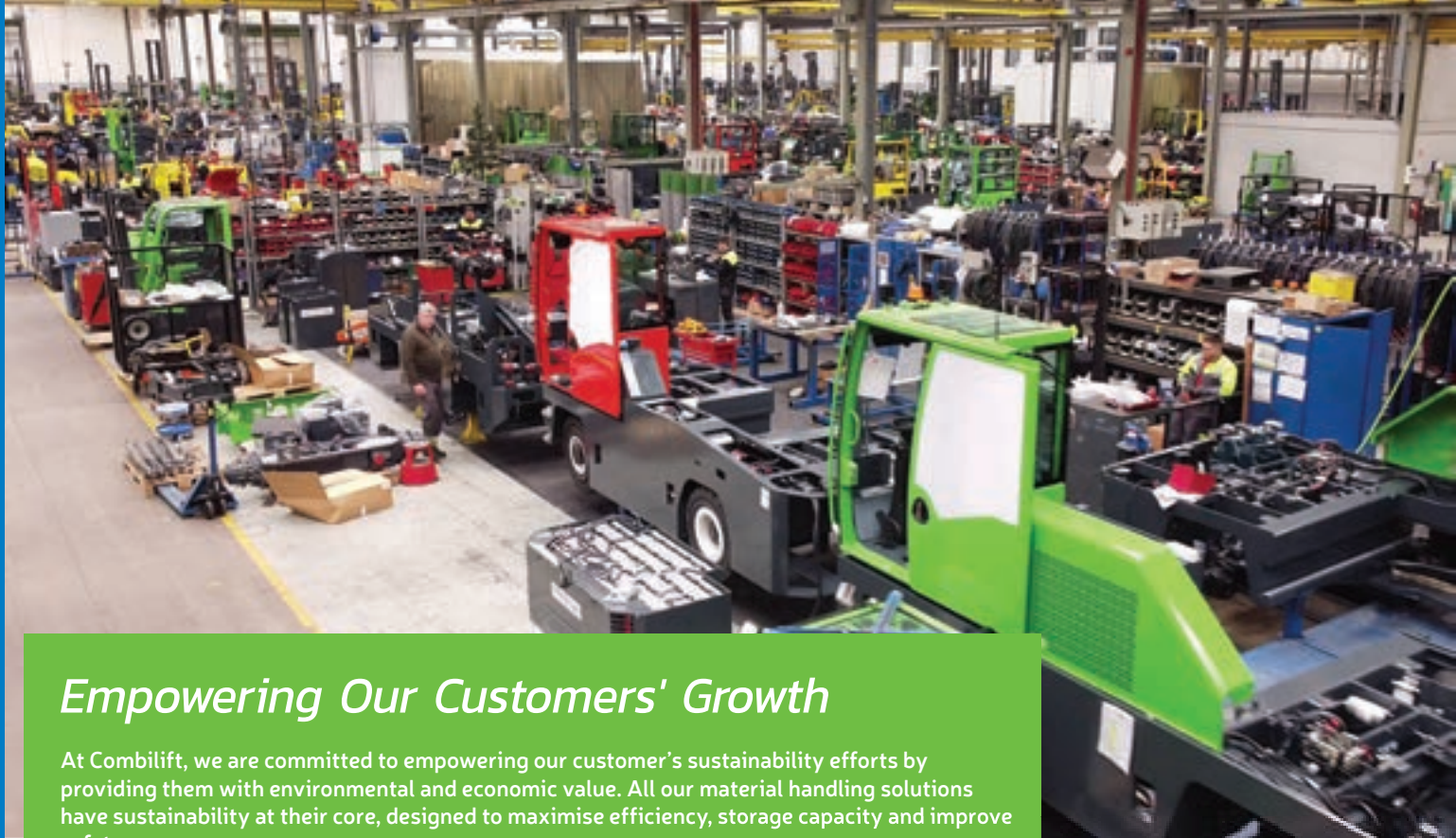


## A World Class Team

Our highly skilled and dedicated team of over **1000 employees** in Ireland design, manufactures and ships material handling solutions worldwide.

Led by founders Robert Moffett and Martin McVicar, Combilift has grown into a global success story. A debt-free company with revenues exceeding €500M, Combilift is also a major local employer. Today, we offer the world's most extensive range of specialist material handling solutions from a single manufacturer.





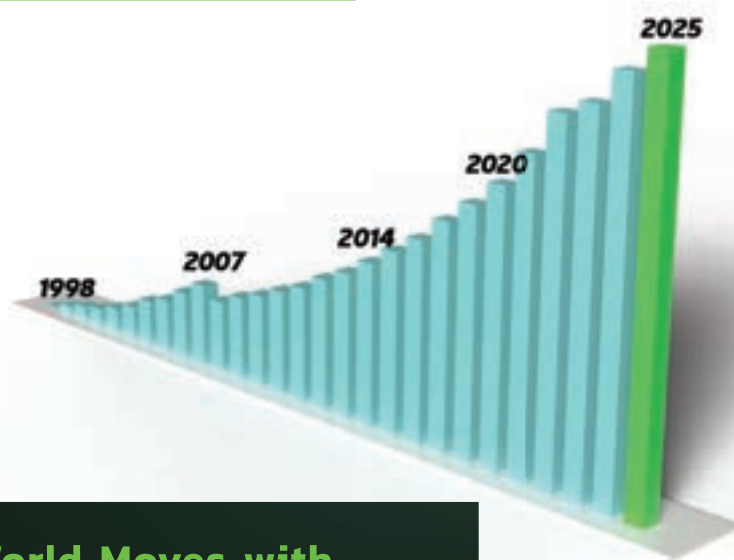
## Empowering Our Customers' Growth

At Combilift, we are committed to empowering our customer's sustainability efforts by providing them with environmental and economic value. All our material handling solutions have sustainability at their core, designed to maximise efficiency, storage capacity and improve safety.

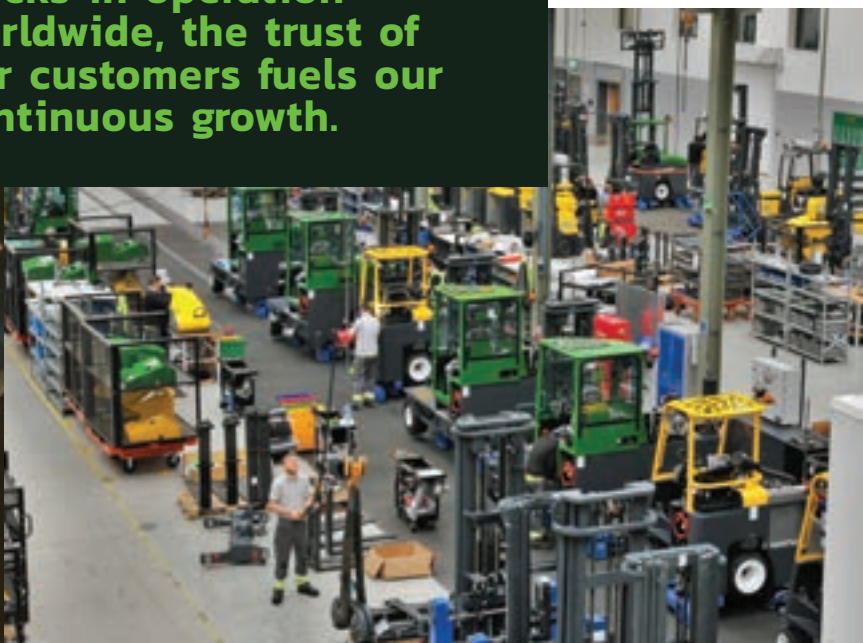
A core part of Combilift's ethos is helping customers grow without the high cost of expanding facilities. By maximising every inch of space, our solutions let businesses store and handle more within the same footprint—reducing energy use and cutting heating, lighting, and maintenance costs.

Growth is also supported by flexible power options: electric forklifts reduce carbon footprint, while diesel and LPG models meet the strictest global emissions and efficiency standards.

Built for longevity, every Combilift truck delivers years of dependable performance—the first units sold is still in operation today. Lower maintenance costs and extended equipment life free up valuable resources for reinvestment in future growth.

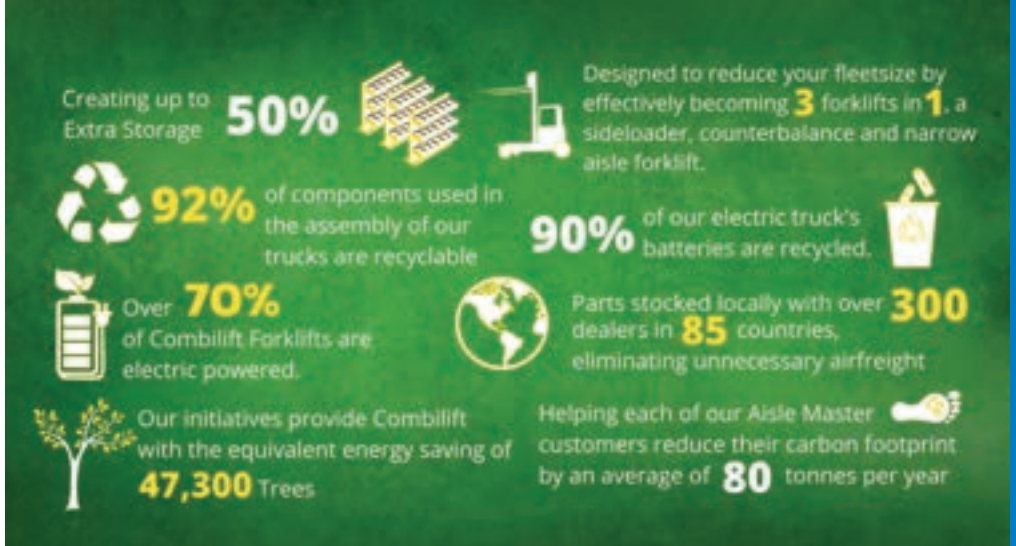


**The World Moves with Combilift. With 100,000 trucks in operation worldwide, the trust of our customers fuels our continuous growth.**



## Focused On Sustainability

Understanding the available space in your warehouse and how it is currently being used is critical to incorporating a sustainable supply chain and making the greatest use of your storage unit.



## Green Production Process & Facilities

We have been certified to international quality and safety management standards. Our production facility has been awarded ISO 9001 international quality management system, ISO 14001 Environment Management and ISO 45001 Occupational Health and Safety Assessment Series.

We also strive to carry out sustainable procurement; a large proportion of our annual sourcing comes from suppliers in Ireland, many of whom have been with us since our inception in 1998, contributing to sustaining our local economy and reducing transport impacts.



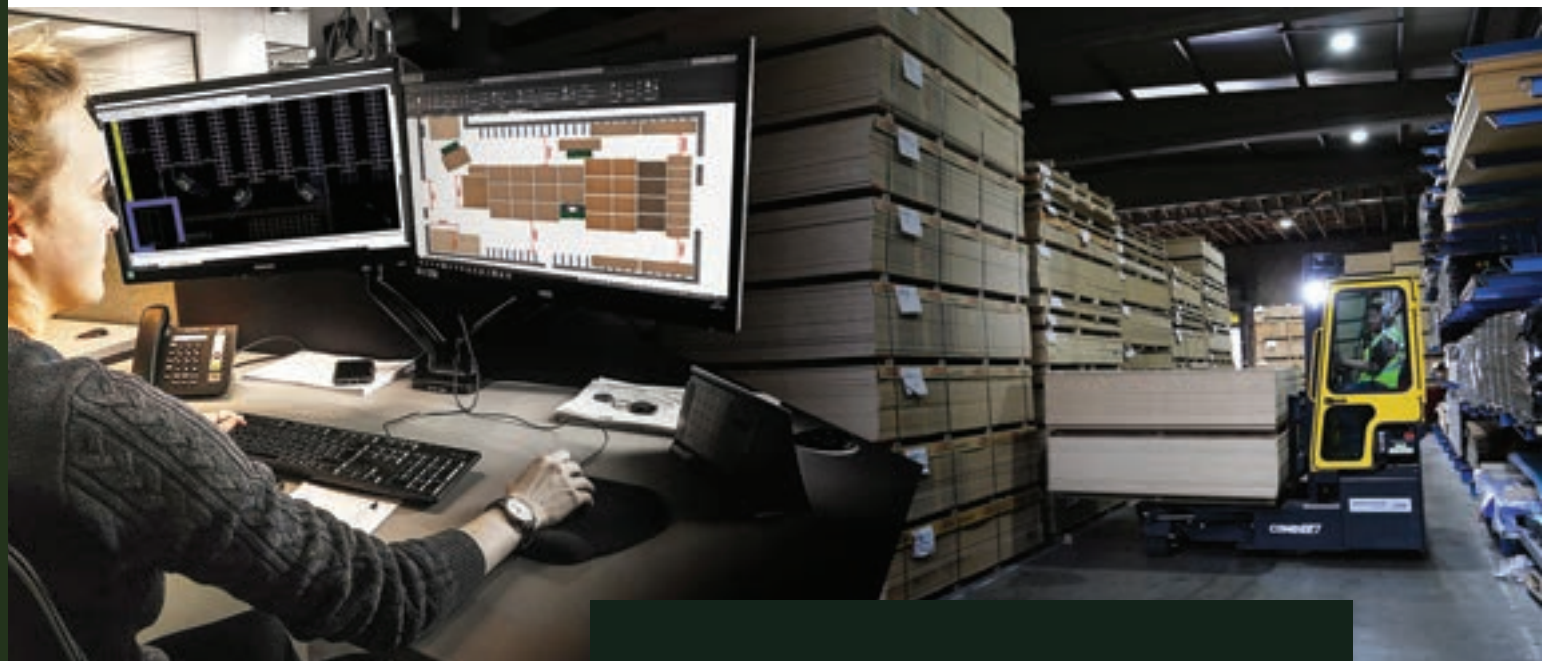
Our 46,500 m2, state of the art manufacturing facility places focus on sustainability and operates to the highest standards.

- 30 percent of its roof space is covered in skylights, enabling staff to work in natural daylight.
- Extra Lighting is provided through 1,100 LED lights with individual sensors.
- Energy is provided by Solar panels supplying 450 kW of energy.
- A 1 MW biomass plant fueled by recycled wood heats the spray booths and assembly area.
- 110,000 litres of rainwater is harvested for use throughout the facility.
- Certified to ISO 9001 international quality management system, ISO 14001 Environment Management and OHSAS 45001 Occupational



# Combilift Warehouse Consultancy

With over 25 year's experience in volume optimisation our team of warehouse planning experts know how to make your space work harder for you. This service, when combined with our material handling products, can deliver up to 100% additional storage capacity.



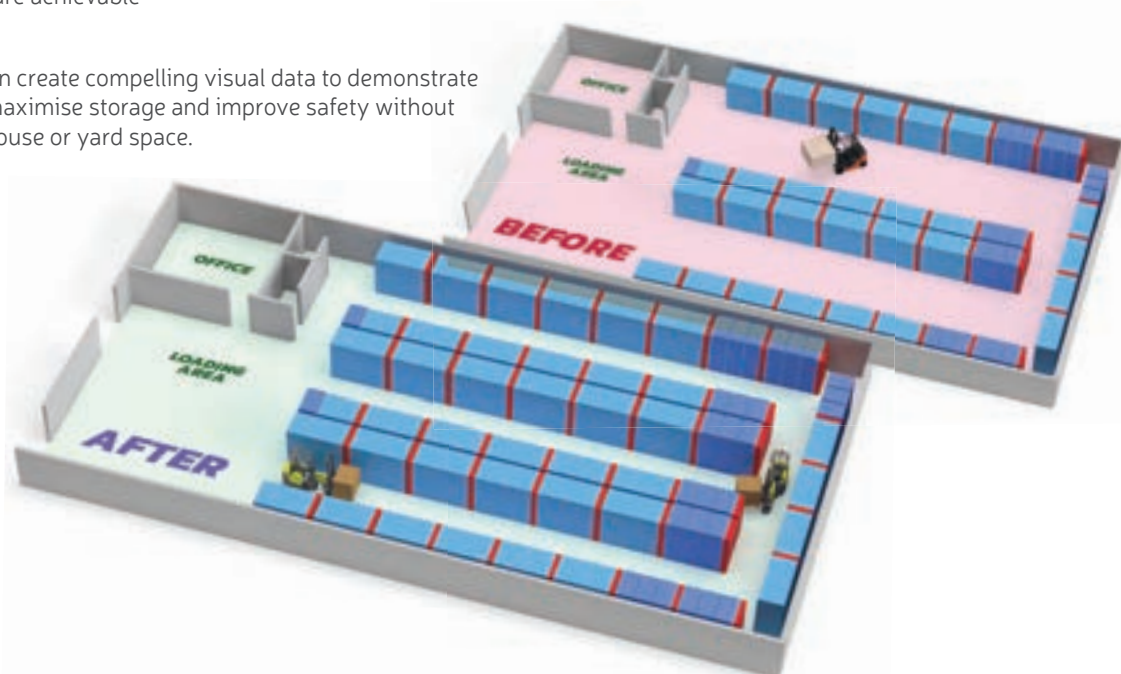
**We don't talk about how our solutions can save you space and money**

**– We Show You How!**

## Free Consultancy Service

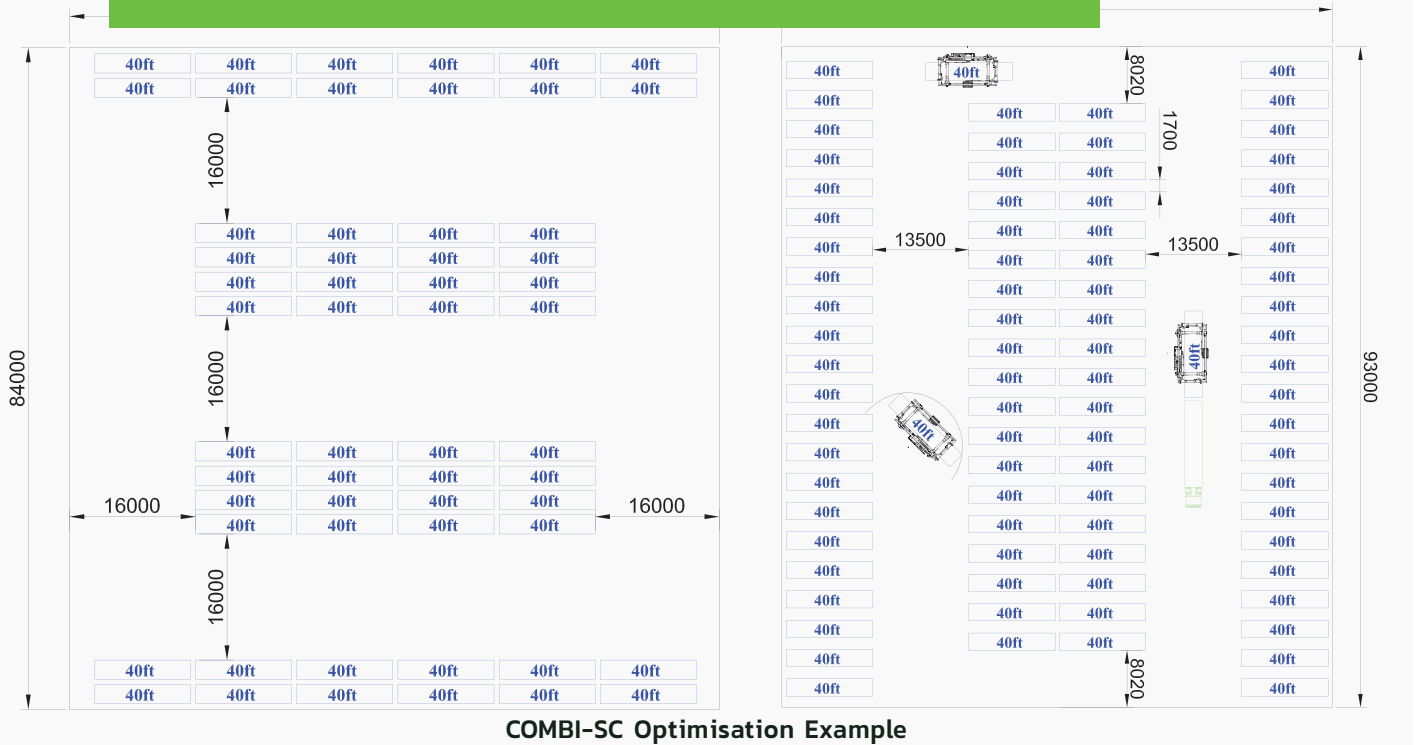
By combining our warehouse consultancy and our wide range of solutions, space savings of up to 50% are achievable

Using your floor plans we can create compelling visual data to demonstrate how to increase efficiency, maximise storage and improve safety without the need to buy more warehouse or yard space.



## No Obligation Layout Design Service

This service is free and without obligation, so contact Combilift and let us show you how to get the most from your storage space



### Before Optimisation

**Restricted Access to Containers 168no.**  
**40' Containers Stacked 3 High**

### After Optimisation

**All Containers Fully Accesible 168no.**  
**40' Containers Stacked 2 High**

## Day One Return on Investment



**Space = Cost**  
**Space Saved = Profit**

Try our complimentary Warehouse Optimisation service, and increase your storage capacity by up to 50% within your current warehouse space – without the cost of expansion!

**CONTACT US TODAY**

Don't miss out on the opportunity to boost your revenue and optimize your operations— contact us for a free consultation today!



# Long Load Handling Specialists

Combilift specialises in making the handling of long and awkward loads more productive, safer and faster. Multidirectional operation, integrated load carrying platform and excellent visibility are just some of the hallmark features that make Combilift solutions the most effective method for transporting long loads.



## C-SERIES

### The Original Multidirectional Forklift

The COMBi C-Series is engineered to provide the safest, most productive, and most reliable way to handle long and specialised loads.

Acting as three forklifts in one—sideloader, counterbalance, and narrow aisle—it eliminates costly double handling and streamlines workflow for maximum efficiency.

With multidirectional operation, the C-Series easily moves long loads through narrow doorways and around obstacles with confidence and safety.

#### Capacity

2,500 kg – 26,000 kg

#### Lift Height

Up to 12 m

#### Engine Type

Electric, Diesel, LPG

#### Aisle Width

As small as 2200 mm





## The Safest Way to Move Your Products

Safety is at the core of the design of the COMBi C-series. A low centre of gravity and integrated platform provide a very stable base for resting long loads on while transporting.

By having the cab mounted to the side of the mast, the operator has a clear view, increasing safety and reducing the risk of product damage



**Whatever your load is, there is a C-series to handle it.**

## Maximise Your Space

The C-series also has the ability to operate as a narrow aisle forklift and can be used as a guided aisle forklift allowing the storage density to be increased, maximising storage space.



## Tough, reliable and built to last

The C-series is designed to ensure the highest levels of efficiency. We take pride in the fact that we offer the widest range of customisation from engine technology to lifting attachments to cab specification.



# COMBi-CB

## The Most Compact Counterbalance Forklift

The innovative COMBi-CB is the original compact multidirectional counterbalance forklift truck. Its manoeuvrability means it is perfect for transporting goods such as palletised loads, both indoors and out.

**Counterbalance operation combined with the ability to carry long loads, such as timber or steel beams, in sideways mode makes the COMBi-CB the most versatile all-round forklift available.**

### Capacity

2,500 kg – 4,000 kg

### Lift Height

Up to 7.5m

### Engine Type

Electric, Diesel, LPG





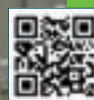
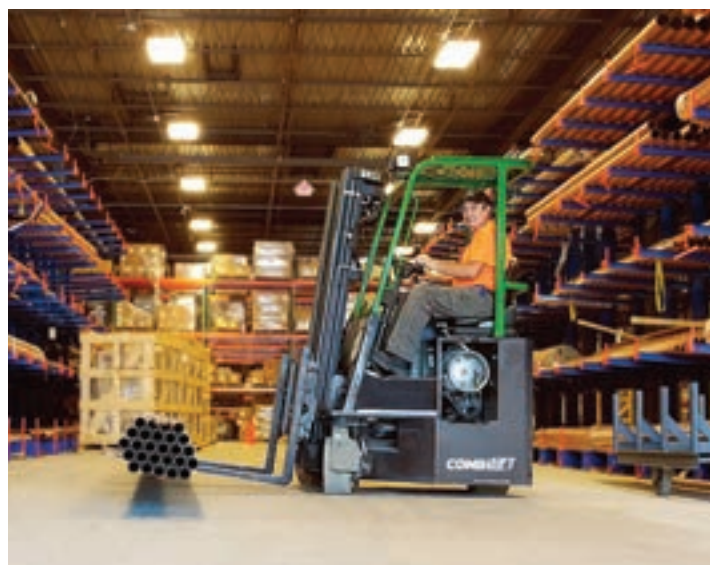
## Maximum Productivity

Its low profile and compact design enable the COMBI-CB to offload HGVs, bring goods to racking or to feed production lines and loading containers.

## Maximum Safety

Driver visibility is maximised by its off centre and high seating positioning which is fully protected from falling material by the sturdy overhead guard.

Controls are intuitive and ergonomically positioned for driver comfort. The seat has full suspension and is fully adjustable.



# COMBi-CBC

## Redefining Precision and Central Driver Operation

Equipped with twin rollout batteries and a patent-pending hydraulic steering system, the Combi-CBC sets a new benchmark in reliability and innovation. Its enhanced design enables carousel steering in both directions during sideways travel, combining modern efficiency with proven dependability.



## Intelligent Seat Rotation

The Combi-CBC and Combi-CUBE feature a centre positioned, patent-pending swivel seat that automatically rotates 15° in the direction of travel, maximising driver visibility and reducing strain when reversing.



# COMBi CUBE

The Combi-CUBE is a new electric model that combines advanced technology with ergonomic design, featuring electronic fingertip controls and centre mounted swivel seats to enhance handling and deliver exceptional driver comfort.

Fitted with Dynamic 360 Steering that enables seamless directional change, makes this model the most manoeuvrable counterbalance forklift on the market.



# COMBi-CB 70E

Combining powerful performance, long-lasting battery life, and exceptional ergonomics the Combi-CB70E is the most compact 7-ton capacity counterbalance truck on the market. It also offers multidirectional capability, making it a versatile, space-saving solution for handling both palletized and bulky loads

## Award Winning Traction

The Combi-CB70E comes with its patented Independent Front & Rear Traction negating the need for differential lock on slippery surfaces and significantly reduces long load momentum twisting when travelling sideways.

Amazing performance, extensive battery life, unrivalled ergonomics and the advantages of the CB range combine to make the CB70E the most powerful, compact multidirectional forklift yet.



# COMBi-SL

## The Most Versatile Sideloader

The COMBi-SL range are sidersloaders with the manoeuvrability and versatility of a multidirectional forklift. They benefit over traditional sidersloaders in that they are extremely manoeuvrable, can work in narrow aisles and are able to block or bulk stack for better space utilisation.

### Capacity

Up to 7000 kg

### Lift Height

Up to 7000 mm

### Platform Length

1200 mm - 1400 mm

### Engine Type

Diesel



# COMBi-SLE

## The Most Versatile Sideloader

The COMBi-SLE 3-wheel electric sideloader forklift ensures the safe handling of long, specialized loads. It offers stability, precise maneuverability, and an eco-friendly electric powertrain, making it ideal for tight spaces and enhancing operator safety.

### Capacity

Up to 5000 kg

### Lift Height

Up to 7000 mm

### Platform Length

1200 mm - 1400 mm

### Engine Type

Electric





# COMBi-4WSL

## The 4-Wheel Sideloader for the Long Haul

The COMBi-4WSL, available in 5t and 6t capacities, is built for fast, reliable performance across large sites, offering significant advantages over other machines. Its spacious cab, deep suspension seat, and adjustable steering column ensure all-day driver comfort, with options such as reverse or front access cab for added ergonomics.

Powered by an ultra-clean Deutz engine without DPF, it delivers lower maintenance costs, reduced fuel consumption, and cleaner emissions.



### Capacity

4000 kg - 6000 kg

### Lift Height

Up to 7000 mm

### Platform Length

1200 mm - 1400 mm

### Engine Type

Diesel / Lpg/Electric

## THE COMBI-FSE

The FSE has been modelled from the successful Sideloader range with its comfortable cab, air suspension seat and generous roof to floor windscreen, with the added benefit of the rear – under deck, battery placement, which guarantees the best operator visibility of any comparable truck, as well as Zero emissions and reduced operational noise

The New Traction System fitted on the Combi-FSE is the most advanced steering system on any four wheeled Forklift on the market.

## Maintenance Made Easy

Maintenance time has been kept to a minimum due to key service features such as its quick interchangeable battery for long shift work, centralised grease points on the front and rear of the load platform and removable panels for easy access to the motor. Regenerative braking which can recapture much of the truck's kinetic energy during deceleration or changes in direction.

### Capacity:

5000kg - 8000kg

### Lift Height

Up to 7000 mm

### Platform Length:

1200 mm

### Power Type:

Electric



# COMBi-ST/GT

Guided aisle operation and a cab designed for efficiency make the COMBi-ST and COMBi-GT stand-on ranges the obvious choices when space is at an absolute premium, such as in stockholding facilities for steel, metal, tubes and uPVC extrusions.

## Forklifts to Handle the Narrowest of Aisles

The narrow cab design of Combilift's stand-on sideloaders allows operation in extremely tight spaces, handling long loads indoors and outdoors with ease.

The Combi-GT two-way sideloader works in aisles as narrow as 1.25m, and many customers choose guided aisle operation for faster navigation and reduced risk of damage to both products and racking.



**For operators working in confined spaces, excellent visibility and speedy picking is essential.**



### Capacity:

2500 kg - 5,000 kg

### Platform Length:

1200 mm

### Engine Type:

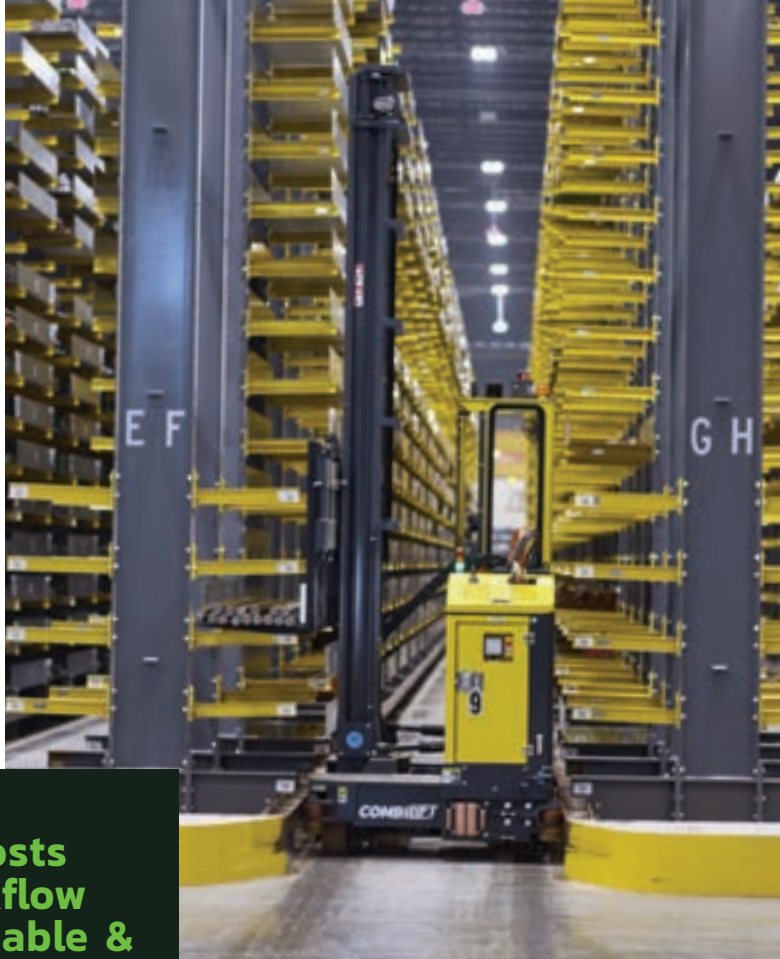
LPG & Electric



# COMBi-AGT

## The first autonomous guided forklift truck with optional manual operation

Combilift's autonomous truck solutions blend advanced technology with 25 years of warehouse optimisation expertise to deliver maximum productivity and safety. The Combi-AGT operates autonomously in guided aisles or free-roaming mode, with the option for manual driving when needed.



**Lower operating costs  
and optimise workflow  
processes with reliable &  
predictable performance.**



## Improve workplace safety

The Combi-AGT reduces risk of workplace incidents by safely working alongside people, existing infrastructure and other vehicles due to its advanced safety sensors and autonomous driving capabilities.

**Capacity:**  
5,000 kg

**Engine Type:**  
Electric



COMBi-AGT



# COMBi-MR

## The Most Agile Combilift

Combilift's multidirectional stand-on reach truck offers superb manoeuvrability and safety in the tightest working conditions.

This compact truck has the ability to drive on various surfaces and features a cab that provides excellent ease of access, aiding quick and efficient picking by the driver.



## Dynamic 360<sup>®</sup>

Combilift's new dynamic 360°™ steering. This intuitive steering provides unique rotation on each wheel, enabling seamless directional change of the truck while on the move. This enables the Combi-MR4 to work in forward, sideward and crab steer mode guaranteeing swift operation and unrivalled manoeuvrability.

Smoothly change direction, speed and hydraulic functions using the multifunction joystick for faster manufacturing and logistics procedures



### Capacity:

2,500 – 4,500 kg

### Platform Height

As low as 380mm

### Steering

Dynamic 360°™

### Engine Type:

Electric

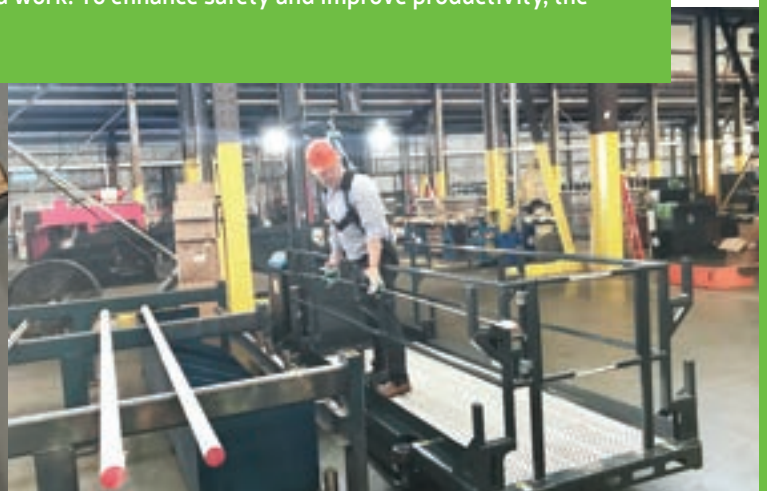




# COMBi-OP

## The Perfect Picking Platform

The COMBi-OP is a safe and robust work platform for efficient processing of multiple orders and long loads. It is the perfect platform for picking long items in very narrow aisles. Carry hooks on the side of the platform mean you can store long items as you work. To enhance safety and improve productivity, the COMBi-OP is designed for guided aisle operation.



### Capacity

500 kg

### Lift Height

Up to 7000 mm

### Engine Type

Electric



# Combilift Warehouse Solutions

In what is a very competitive warehousing sector, getting the most from your space is crucial. With Combilift's range of warehousing solutions, you can dramatically increase the productivity of your warehouse while reducing costs.

By using our free warehouse consultancy service and wide range of innovative products designed to maximise your storage, improve safety and increase efficiency, you could increase your warehouse capacity by up to 50%.



**Maximise your warehouse capacity, increase your productivity and reduce product damage while operating in narrow aisles.**

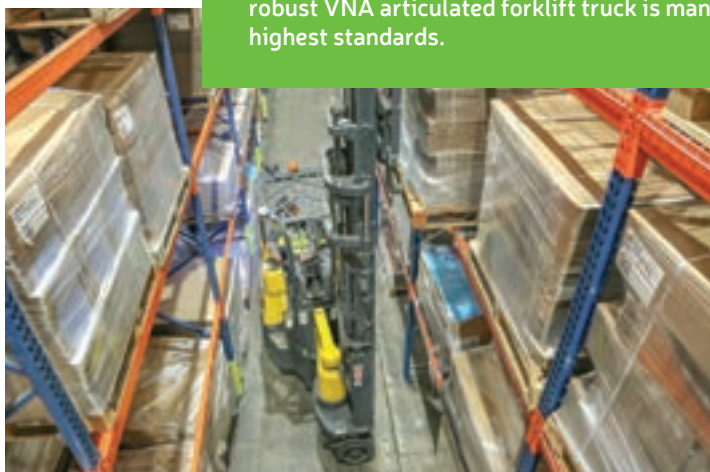
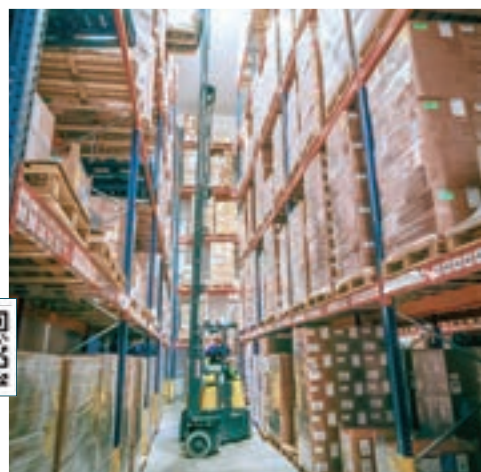


## AISLE MASTER

**The Articulated Forklift That Does It All**

Designed to be an all-in-one warehousing forklift, the Aisle Master offers more efficient offloading, handling and storage.

Aisle Master trucks are tough, versatile and built to last. Designed to withstand heavy-duty use inside and out, each robust VNA articulated forklift truck is manufactured to the highest standards.





## Operates Seamlessly Inside & Out

Save time and money with the one truck, transporting loads from trailer to racking in a single operation.

Thanks to the large rubber tyres, operators can make light work of loading and off loading in semi-rough yards while enjoying a smooth ride regardless of the terrain.

This versatility combined with extreme reliability makes the Aisle Master the perfect solution for the DIY & building supply industry

## Smaller Aisles Mean More Racking

Combilift has the power to transform the way our customers look at storage. Powerful, precision lifting technology means Combilift can exploit every inch of vertical space while its ability to manoeuvre through narrow aisles and doorways means our customers can dramatically increase the amount of racking in their warehouses.



*Up to*  
**50%**  
*More Storage with  
Aisle Master*

Using AisleMaster you can optimise your racking layout and reduce aisle widths down to as little as 1.6 m, to dramatically increase your storage capacity by up to 50%



### Capacity:

1,500 kg - 3,000 kg

### Lift Height

Up to 15 M

### Engine Type

Electric- LPG

### Aisle Width

As narrow as 1.6 M



# Aisle Master Cold Store

## Warm and Productive in a Cold Climate

The cost of cold store and temperature controlled warehousing operations is much higher, making space saving more crucial than ever. Aisle Master's cold store model can handle the harsh climate of cold store facilities while providing all the benefits of increased storage and productivity.



The fully enclosed, high visibility cab keeps drivers warm, reducing the time needed for breaks and increasing productivity. To improve driver visibility while performing truck to rack operations, heated cab windows eliminate the build-up of condensation when driving between different temperatures.

# Aisle Master Order Picker

## Order Picking Made Easy

The Aisle Master-OP (AME-OP) is a stand-on electric powered model that combines the advantages of a narrow aisle articulated forklift and an order picker for versatile operation in warehousing applications allowing ease of movement through very narrow aisles for order picking and replenishing.

The AME-OP truck has all the key advantages of the conventional Aisle Master – indoor/outdoor, for loading/offloading and for stock replenishment.

The AME-OP features a patented chain steering system, which allows the truck to articulate more than 205°, and an inline drive motor and front drive axle, all of which enable narrower aisle operation.



# Combilift Pedestrian Range

## Multi-Position Tiller Arm - Innovation in Safety

Combilift's multi-position tiller arm is designed to maximise operator safety and protect those working nearby.



The tiller arm enables push-button rotation of the rear wheel, allowing the operator to stand at the side of the truck, the safest position when placing and picking in narrow aisles. This improves visibility and greatly reduces the risk of incidents in tight confines while reducing operating aisle widths.



The tiller can be turned to the left or right, allowing the operator to remain at the side, while maintaining full steering control. Standing to the side of the stacker eliminates the risk of being trapped or crushed, while allowing the truck to be to operate in very narrow aisles.



# COMBi-WR

## The Pedestrian Stacker for Very Narrow Aisles

The COMBi-WR is the first purpose built pedestrian reach stacker with the ability to operate in a VNA aisle of just 2.1m and with a lift capacity of 2000kg. Its excellent ergonomics make it easy and stress free to operate.



The patented multi-position tiller improves forward visibility and greatly reduces the risk of incidents in tight confines. The lift height can be tailored to your application up to 6.6 m and the ergonomic control arm provides 2 speed operation for enhanced safety.

**Operate in a VNA aisle of just 2.1 m and lift capacities of 2000 kg.**

### Capacity

1,000 kg – 2,000 kg

### Lift Height

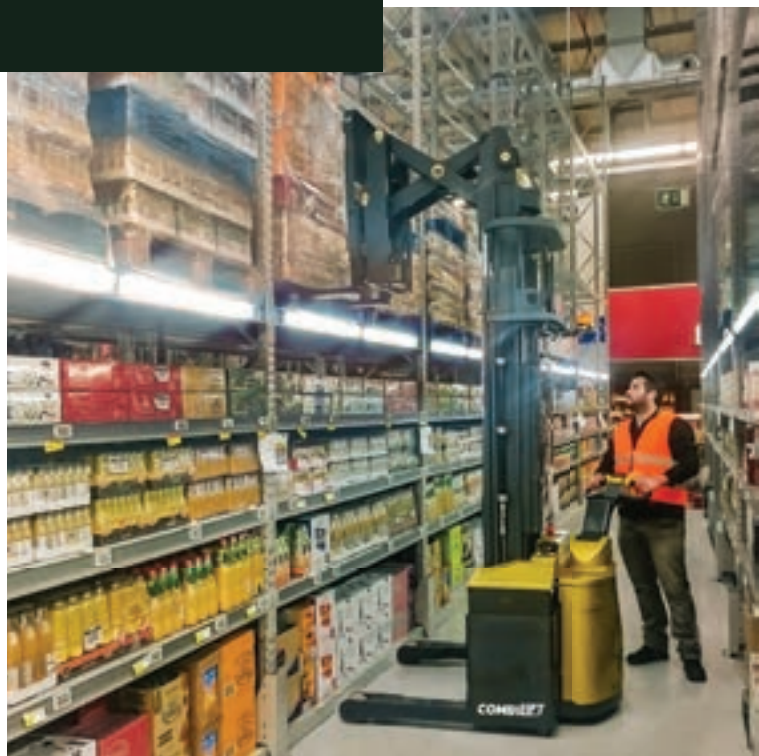
Up to 6.6 m

### Engine Type

Electric

### Machinery Type

Pedestrian Stacker



# COMBi-CS

## Packed With Innovation

As with all our pedestrian range, Combilift's first pedestrian counterbalance reach forklift truck is equipped with our patented multi-position tiller arm.

This provides maximum operator visibility, increases safety and means the COMBi-CS can operate in the narrowest of aisles.

**This pedestrian reach stacker can operate in the narrowest aisles of any truck of its type in the market.**

### Capacity

1000 kg - 4,000 kg

### Lift Height

Up to 6 M

### Engine Type

Electric



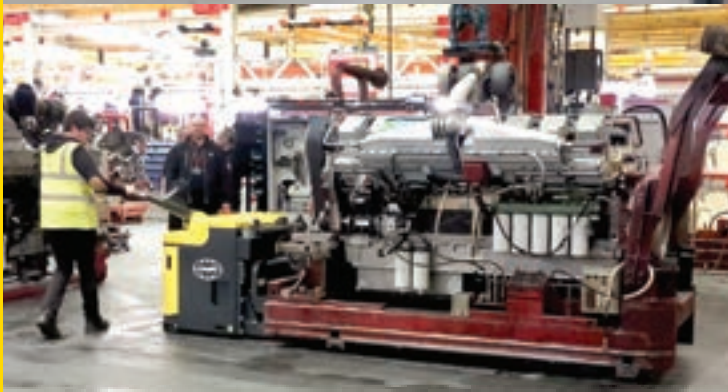
# COMBi-PPT

## High Capacity Powered Pallet Truck

Powerful, economical and innovative in design, CombiLift's Powered Pallet Truck is a highly versatile option, suitable for small to medium-sized warehouses and production facilities.

All-wheel drive allows the Combi-PPT to glide effortlessly around the warehouse, negotiating obstacles with ease.

The COMBi-PPT is equipped with our patented multi-position tiller arm providing safer operation, maximum operator visibility and narrow aisle performance.



**Unrivalled energy efficiency means you get maximum output from every charge, while quick-change technology enables you to quickly insert a fresh battery and carry on working effectively.**



### Capacity

up to 16,000 kg

### Engine Type

Electric

### Machinery Type

Pedestrian Stacker



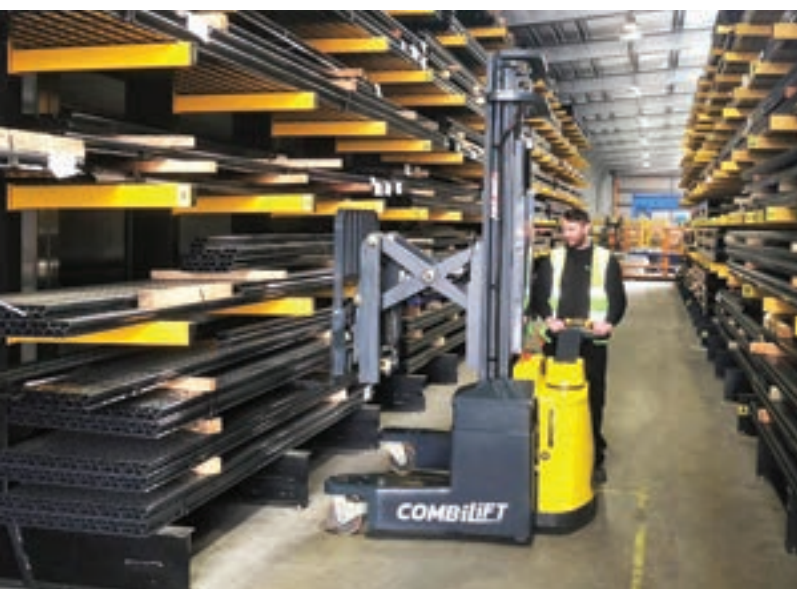
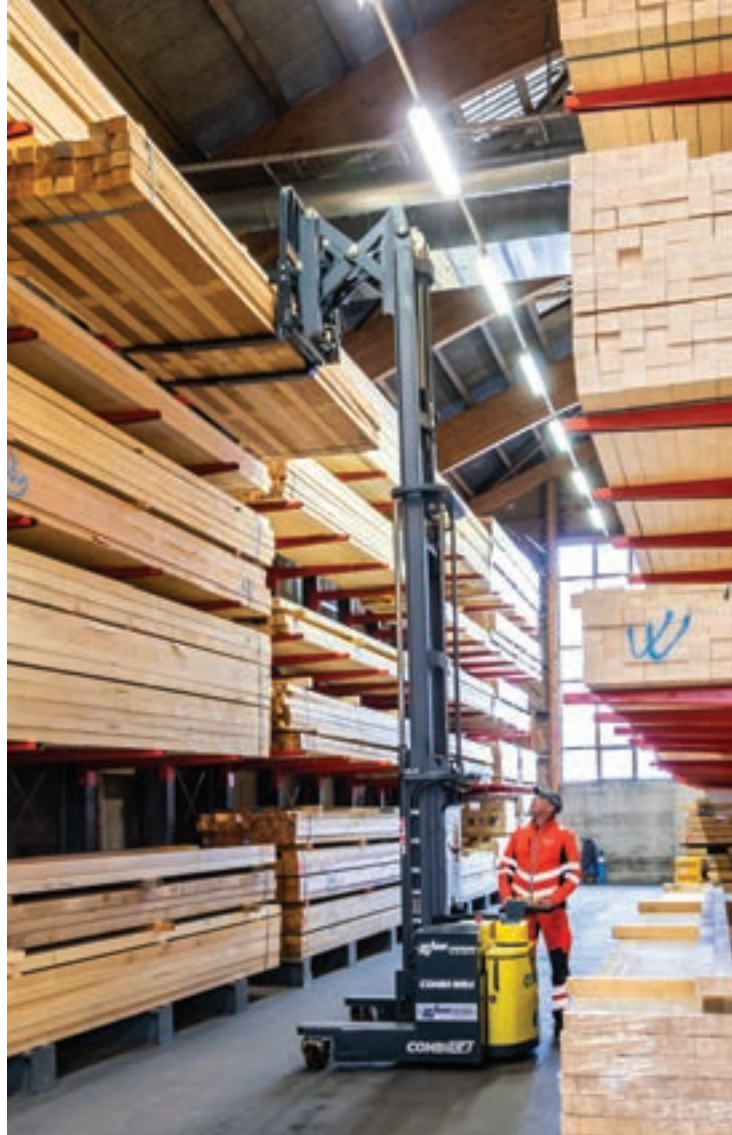
# COMBi-WR4

## The Original 4-way Pedestrian Stacker COMBi-WR

For lighter loads in busy areas, pedestrian trucks offer safer, smarter handling than ride-on forklifts. That's why Combilift created the COMBi-WR4 pedestrian reach stacker.

## The Pedestrian Stacker for Very Narrow Aisles

The COMBi-WR4's ability to handle long loads in sideways mode combined with its multi position tiller arm and pantograph reach forks means it can operate in very narrow aisles, as narrow as 2.1 m



The first 4-way pedestrian reach stacker with multidirectional travel, innovative safety features & effortless operation

### Capacity

1000 kg - 2000 kg

### Engine Type

Electric

### Lift Height

Up to 6.6 m



COMBi-WR4





## *Containers & Oversized Loads*

Combilift's range of straddle carriers and mobile gantries provide safe, efficient solutions for even the most extreme load handling situations. Distribution, shipping, aerospace, steel fabricators, wind & green energy and precast concrete – there's no load too large or heavy for these workhorses.

## **COMBi-SC**

### **Handling Containers & Oversized Loads**

The COMBi-SC is the perfect container handling solution for those who require fast turnaround times and complete flexibility.

The COMBi-SC's ability to double stack containers and travel through low doorways gives you the ability to lift, set down and transport containers throughout your site. With 360° visibility and 2 min offloading from trailer to ground, the Combi-SC provides faster loading times and eliminates the need for trailers to have to wait to be loaded.



## Tough & Reliable

Unmatched reliability, fuel efficiency and much lighter service weight ensure maximum productivity. Straightforward design with easy to source, standard components offer extreme reliability and maintenance wherever you are in the world.



## Benefits

- Cost Effective
- High Performance
- Low Service Costs
- Safe Ground Level Stuffing
- Efficient Dock Loading
- Flexible Container Handling with Top Lift
- Suitable for Rough Terrain
- Remote Control Option

**The Cost Effective  
Solution for  
Handling Containers  
& Oversized Loads**



# COMBi-SC 3-HIGH

## Ultimate Solution For Seamless Container Handling Operations

The COMBI-SC 3-HIGH Container Handler offers unparalleled performance with features designed to simplify your workflow, while providing extra security, comfort and efficiency. It includes 2 Wheel Drive for optimal traction, a 2 Wheel Brake system for precise control,

All Wheel Steer for effortless manoeuvrability, and durable 14.00x24 Solid Tyres Dual Wheel Assemblies for stability. The COMBI-SC 3-HIGH is built to enhance efficiency and performance in all your operations.



### Advantages:

- Capable of lifting 20', 30', 40', 45' Containers
- Independent Sideshift for easy placement of containers
- Easy access cab, Raised for optimum viewing of all operations
- Ergonomic Fingertip controls
- Guided spreader to eliminate load swaying
- Multiview camera system for extra visibility when working in narrow aisles
- Engine Bay and Hydraulic Compartment at ground level for ease of Service
- Access platform of easy maintenance and inspection
- 8-wheel design for low ground pressure
- 4 steering modes for increased manoeuvrability
- Combi Connect Telematics system included for real-time factory support



# COMBi-MG

## Handling And Conveying Extremely Large Loads

The COMBi-MG Mobile Gantry is the perfect solution for handling and conveying extremely large loads typical of industries such as shipping, aerospace, wind energy, large scale civil engineering industry, precast concrete and large scale structural steel industries.

Highly customisable to fit any load handling challenge, the COMBi-MG is highly adaptable to your needs. It can be built to dimensions specifically to suit your application. It can be fitted with a very wide range of lifting accessories to suit any application or industry.

**The perfect solution  
for handling and  
conveying extremely  
large loads**



### Capacity

20,000kg - 100,000kg

### Lift Height

Fully Customisable

### Engine Type

Diesel/lpg

### Width

Fully Customisable



# COMBI-SBT

## Shuttle Transporting Pre-Staged Concrete

The Combilift Swap Body Transporter (Combi-SBT) is a diesel-powered shuttle vehicle with a capacity of 50t designed for transporting pre-staged concrete loads on swap bodies around the yard and from the manufacturing facility to storage

**Excellent visibility due to a 90° off-centre cab position offers unrivalled speed of operation for quicker turnaround of loads.**



### Capacity

50,000kg

### Lift Stroke

370mm independent front & rear lift

### Engine Type

Diesel, LPG

### Machinery Type

Swap body shuttle



# COMBi-LC BLADE

## Remote Controlled Tandem Load Carrier

Diesel-powered, remote control operated machine designed for tandem operation for moving wind turbine blades & long loads around yards, and from production facilities to storage areas, enabling loads of 75t to be transported.



Extremely manoeuvrable with remote control steering the Combi-LC is perfect for moving wind turbine blades



### Capacity

up to 75,000kg

### Engine Type

Diesel



# COMBi-SPI

## Self Propelled Inloader Revolutionising High-Load Transport

The development of this cutting-edge solution for handling concrete was driven by the demand for a highly efficient, manoeuvrable, and cost-effective alternative to traditional trailers and trucks.

Developed in collaboration with precast concrete specialists Spaansen, the Electric Combi-SPI was designed to handle 30-tonne loads on industry-standard Inloader Pallets, it delivers exceptional visibility, agility, and operator-friendly controls without compromising on performance or footprint.

## Advanced Features for Unmatched Performance

- Side-Facing Cab: Provides operators with a clear view of both the load and direction of travel, ensuring enhanced safety and precision.
- Sliding Load Supports: Adjustable supports along the chassis to accommodate various load lengths and heights during travel.
- Pivoting Front Dual-Wheel Configuration: Eliminates the need for suspension, optimises stability and gives a tighter turning circle.
- 300mm Ground Clearance: Designed for both concrete and gravel yards, offering reliability across diverse work environments.
- Power Options: Available in Electric (with interchangeable battery system), Diesel, and LPG, catering to different operational needs.
- Large Solid Tires for durability and yard maintenance.
- Compact Yet Powerful: The short chassis enhances load support, maintains a low centre of gravity and offers more manoeuvrability, especially while operating within production facilities.

## Industry-Changing Efficiency

With unmatched manoeuvrability and faster operational speed, the Combi-SPI Inloader transforms yard-based logistics by eliminating the reliance on multiple trailers and shunters, significantly enhancing efficiency and reducing operational costs for businesses handling oversized, high loads.





# COMBi-CSS

## Load A Full Container in Under 6 Minutes

Safe, fast and easy to operate, the COMBi-CSS from Combilift is a cost-effective container loading solution that can load a 40-foot container in as little as 6 minutes. It is a much less labour intensive system.

All loading is done outside the container, reducing risk to personnel and minimising product damage. Loads weighing up to 30,000kg can be safely and quickly formed on the platform outside the container and placed into the container, by one forklift and a single operator.

ROI will be achieved in a very short time and for this reason the Combi-CSS is the obvious choice for container loading.



**A cost-effective container loading solution that can load/unload a 40' container in as little as 6 minutes.**

### Capacity

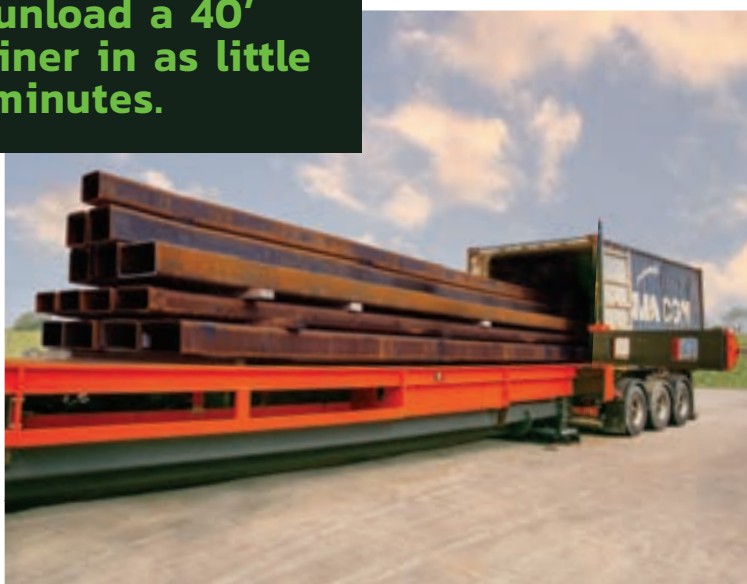
30,000kg

### Engine Type

3 Phase Electric

### Container Size

20'/30'/40'



# COMBi-CLL

## Container log loader

The Combi-CLL Log Loader, is a game-changer in how we handle and load logs into containers. It's all about speed, efficiency, and most importantly, safety. Designed specifically to tackle the tricky demands of the forestry industry, the Combi-CLL is making waves with its cutting-edge tech.



# COMBi-RT

Designed specifically to meet the harsh demands of the poultry industry, its impressive handling and robust construction make it a valuable workhorse for any agricultural business.

Large tires on a three-wheel chassis plus tractor grip tyres, all-wheel traction and differential lock give the COMBi-RT a compact turning circle and excellent grip on rough terrain, while a generous 300 mm ground clearance ensures minimal disturbance of litter.



**Built for tough jobs — the Combi-RT delivers reliable rough-terrain performance across agriculture and poultry**



Ultra-smooth controls permit quieter, more refined handling for optimal livestock welfare. For the driver, an offset driving position affords excellent visibility while a deep suspension seat and fully enclosed cab options provide all-day comfort in any weather.

## Capacity

Up to 3,000kg

## Engine Type

Diesel

# COMBi-LR

The Combi-LR is based on the highly successful and reliable C-Series multidirectional forklifts. The offset driving position provides the ideal view of the cage while a very small turning radius makes for excellent manoeuvrability.

Three wheel agility and all-wheel traction with differential lock deliver impressive performance working indoors and out, even on rough terrain. A small turning circle makes it easy to work inside sheds or enclosed yards and fully hydrostatic drive delivers power and precision as and when you need it.



## Capacity

Up to 5000 kg

## Engine Type

Diesel





# Refurbished Combilift Trucks

## Quality You Can Trust

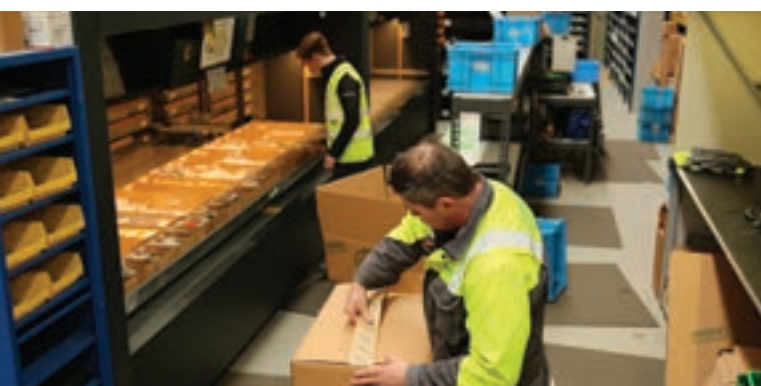
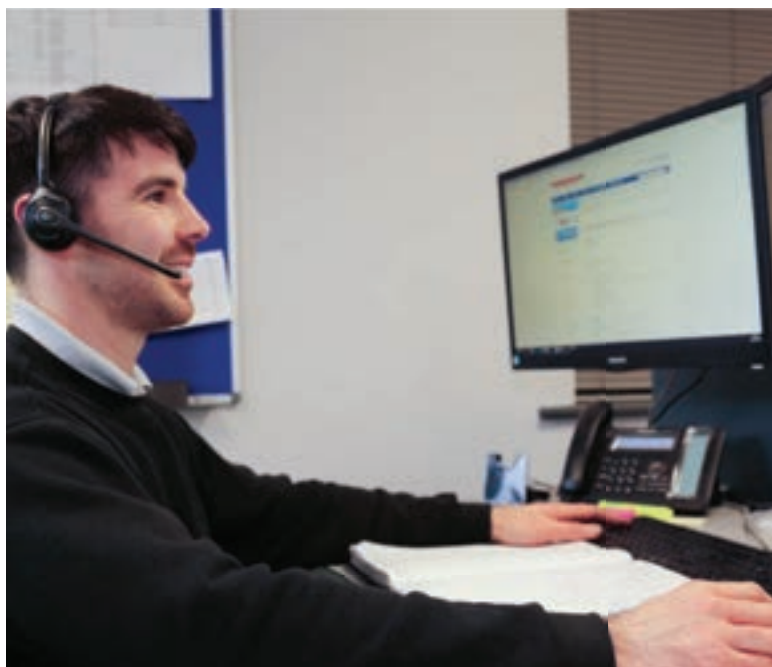
Combilift's refurbished trucks offer a cost-effective way to access the same reliability, safety, and performance as our new models. Each truck is fully inspected, serviced, and restored by Combilift experts using genuine parts, ensuring it meets our exacting standards before returning to work.



# Aftersales Support

Combilift offers robust and comprehensive after-sales support as a core part of its service to customers.

From the moment your equipment is delivered, enjoy complete access to Combilift's dedicated global service team—this includes responsive technical assistance, warranty services, and access to an extensive Parts Portal and knowledgebase



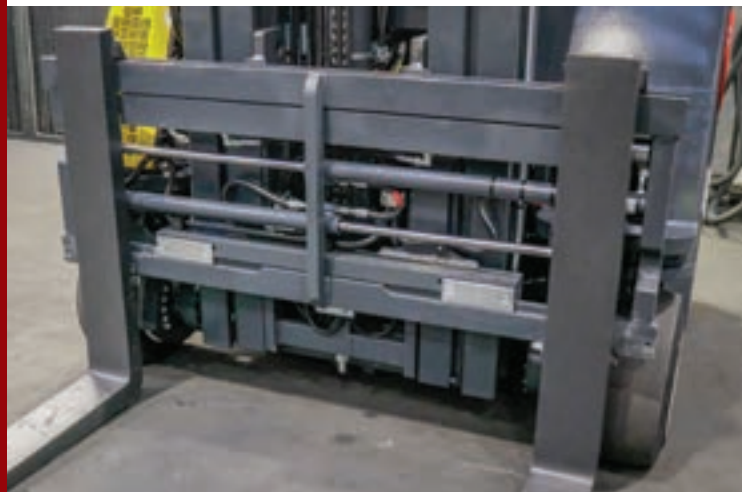
Backed by local spare parts warehouses and Combilift's network of international dealers, this support structure ensures genuine parts, rapid delivery, and professional service wherever you operate



# Attachments

## Handle Any Load with Our Wide Range of Attachments

Combilift specialises in providing the best possible solutions for handling long and awkward loads and we offer a very wide range of attachments. We use only the highest quality attachments from proven providers to ensure reliability and maximum productivity. standards before returning to work.



### COMBi-SAFELIFT

The Combi-Safe is an anti-overload device introduced by Combilift to enhance forklift safety. It features a load moment indicator (LMI) with a "traffic light" system (green, amber, red) to signal the operator about potential overloading. An audible alarm also alerts the operator to an overload situation. This system is designed to prevent accidents, reduce product damage, and minimize costly repairs.

The safe-lift incorporates a strain sensor on the mast section of the forklift and a cut-out valve on the hydraulic line. When a forklift is potentially overloaded, this device will disable lifting. When an overload occurs, an audible alarm will alert the operator, and the "load moment indicator" will flash green, amber, or red, accordingly.



# COMBi CONNECT FLEET TELEMATICS



## Smarter Fleet Management

CombiLift's proprietary telematics system delivers a unified approach to fleet management, using GPS technology, sensors, and engine data to give you complete visibility of your trucks.

Unlike traditional systems, CombiLift Telematics is fully transparent — both the platform and the data are owned by you, the customer. This empowers your business with the insights needed to drive efficiency, safety, and productivity across your operations.

Designed around your specific needs, the system transforms raw data into clear, actionable insights. Powered by advanced analytics and cutting-edge data science, it revolutionises how you monitor, manage, and optimise your forklift fleet — turning information into a true operational advantage.



# **COMBiLiFT**

**LIFTING INNOVATION**

**Monaghan, Ireland**  
**+353 47 80500**  
**combilift.com**



**Search #Combilift**